



## WIG-TIG-Gas protection TIG LENS COVER

- Field of application:** The TIG LENS COVER nozzle provides a large inert atmosphere for the welding of reactive metals such as titanium, molybdenum, nickel – based and aluminium based alloys as well as non – reactive metals like stainless steel.
- Operation method:** The TIG LENS COVER contains a fine-meshed metal mesh. This ensures an even gas flow. This prevents entering of atmospheric oxygen to the weld seam.
- Torch types:** The TIG LENS COVER can be used with the following torches:  
SR9, SR20, CK230, HW25, SR17, SR18, SR26, TL18, TL510
- For electrodes-Ø:** 1,6mm - 2,4mm - 3,2mm
- Advantages:**
- high protection gas cover on Ø27mm
  - changeable metal mesh insert
  - Weight advantage against standard jumbo lens



SR9, SR20

1202200

1450416 - Ø1,6  
1450424 - Ø2,4  
1450432 - Ø3,2

1202316 - Ø1,6  
1202324 - Ø2,4  
1202332 - Ø3,2



99400028 - Ø1,6  
99400029 - Ø2,4  
99400030 - Ø3,2

**TIG LENS COVER SR9 / 20**  
Conversion Kit, consisting of:

- Isolator
- Collet
- Gaslens
- Lens Cover with metal mesh insert



SR17, SR18,  
SR26, TL18

994000303

AR1706116 - Ø1,6  
AR1706124 - Ø2,4  
AR1706232 - Ø3,2

AR1707316 - Ø1,6  
AR1707324 - Ø2,4  
AR1707332 - Ø3,2



99400028 - Ø1,6  
99400029 - Ø2,4  
99400030 - Ø3,2

**TIG LENS COVER-  
SR17/18/26/510**  
Conversion Kit,  
Consisting of:

- Isolator
- Collet
- Gaslens
- Lens Cover with metal mesh insert



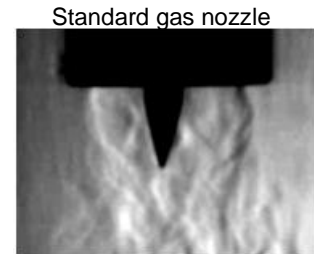
**TIG LENS COVER Conversion Kit and single parts for SR9, SR20, CK230**

consisting of: Isolator, Gaslens, Collet, Lens Cover with metal mesh insert

Article	Description
994000281	Conversion Kit cpl. Ø1,6mm
994000291	Conversion Kit cpl. Ø2,4mm
994000301	Conversion Kit cpl. Ø3,2mm

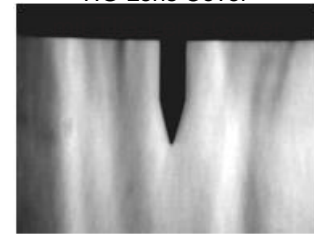
**Spare parts**

Article	Description
1090212	Back cap short 41V33
1090211	Back cap medium 41V35
1090210	Back cap long 41V24
1202200	Isolator 598882
1450416	Collet Ø1,6mm, L=25mm
1450424	Collet Ø2,4mm, L=25mm
1450432	Collet Ø3,2mm, L=25mm
1202316	Gaslens Ø1,6mm 45V23
1202324	Gaslens Ø2,4mm 45V44
1202332	Gaslens Ø3,2mm 45V45
99400028	Cover Nozzle with metal mesh insert Ø1,6mm
99400029	Cover Nozzle with metal mesh insert Ø2,4mm
99400030	Cover Nozzle with metal mesh insert Ø3,2mm
994000282	Replacement metal mesh insert Ø1,6mm
994000292	Replacement metal mesh insert Ø2,4mm
994000302	Replacement metal mesh insert Ø3,2mm
10018201	Holder for metal mesh insert



Standard gas nozzle

Turbulent gas flow



TIG Lens Cover

Even gas flow

Tested in the welding laboratory of Linde AG

**TIG LENS COVER Conversion kit and single parts for SR17, SR18, SR26, TL510**

consisting of: Isolator, Gaslens, Collet, Lens Cover with metal mesh insert

Article	Description
994000304	Conversion kit cpl. Ø1,6mm
994000305	Conversion kit cpl. Ø2,4mm
994000306	Conversion kit cpl. Ø3,2mm

**Spare parts**

Article	Description
1170401	Back cap short 57Y04
1170403	Back cap medium
1170301	Back cap long 57Y02
994000303	Isolator
AR1706116	Collet Ø1,6mm
AR1706124	Collet Ø2,4mm
AR1706132	Collet Ø3,2mm
AR1707316	Gaslens Ø1,6mm
AR1707324	Gaslens Ø2,4mm
AR1707332	Gaslens Ø3,2mm
99400028	Cover nozzle with metal mesh insert Ø1,6mm
99400029	Cover nozzle with metal mesh insert Ø2,4mm
99400030	Cover nozzle with metal mesh insert Ø3,2mm
994000282	Replacement metal mesh insert Ø1,6mm
994000292	Replacement metal mesh insert Ø2,4mm
994000302	Replacement metal mesh insert Ø3,2mm
10018201	Holder for metal mesh insert



10018201

994000282 - Ø1,6  
994000292 - Ø2,4  
994000302 - Ø3,2