



Robotic welding torches for hollow wrist robots

2023

**Compatibility with different
Robot manufacturers**

**Integrated gas nozzle sensor for
tactile seam search using the
gas nozzle***

Rotational range: +/- 240°



water- and air cooled versions

Robot mount-ARB3

**Can be mounted on the robot on the
torch side and on the machine side**

High precision

Wire Break-Ready (Plug and Play)

* Only for the water-cooled version

M-AR 3.1G-Hw, air cooled



Technical data:

| | |
|--------------------------|--------------------|
| Rating: | 250 A |
| Duty cycle: | 100 % |
| Wire-Ø: | 0,8 - 1,2 mm |
| Torch necks: | 45°, 45°-UK |
| Torch lengths: : | 1,0 / 1,2 / 1,5 m* |
| Connection machine side: | Euro-Connection* |
| Rotational range: | +/- 240° |

M-AR 5.2W-Hw, water cooled



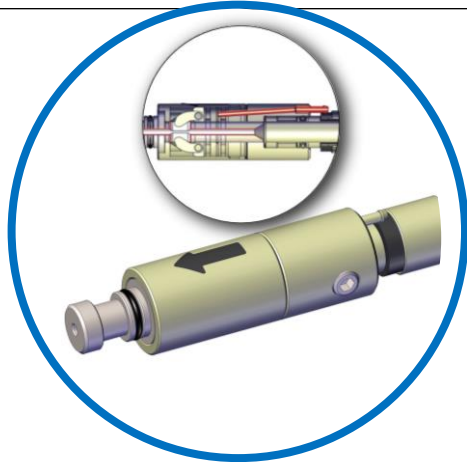
Technical data:

| | |
|--------------------------|--------------------|
| Rating: | 450 A |
| Duty cycle: | 100 % |
| Wire-Ø: | 0,8 – 1,6 mm |
| Torch necks: | 22,5° / 45° |
| Torch lengths: | 1,0 / 1,2 / 1,5 m* |
| Connection machine side: | Euro-Connection* |
| Rotational range: | +/- 240° |



Accessories

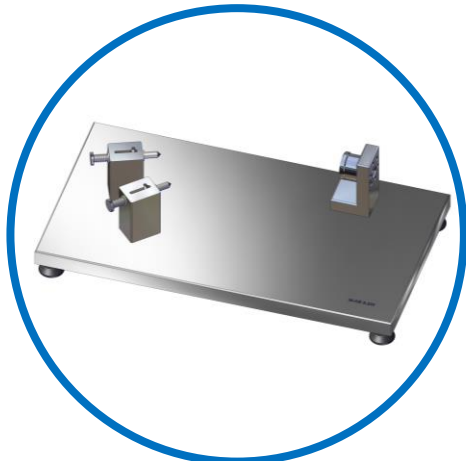
100 years,
Because We
Can 1920 2020



Wire Break



Robot mount ARB3



Testing gauge



Teachtip



Robotic welding torches for hollow wrist robots

100 years,
Because We
Can
1920 2020



Series launch in Q1 2024