



Fume-Extraction-Torch RGA FKS 400W, water cooled

Technical data according to EN 60 974-7

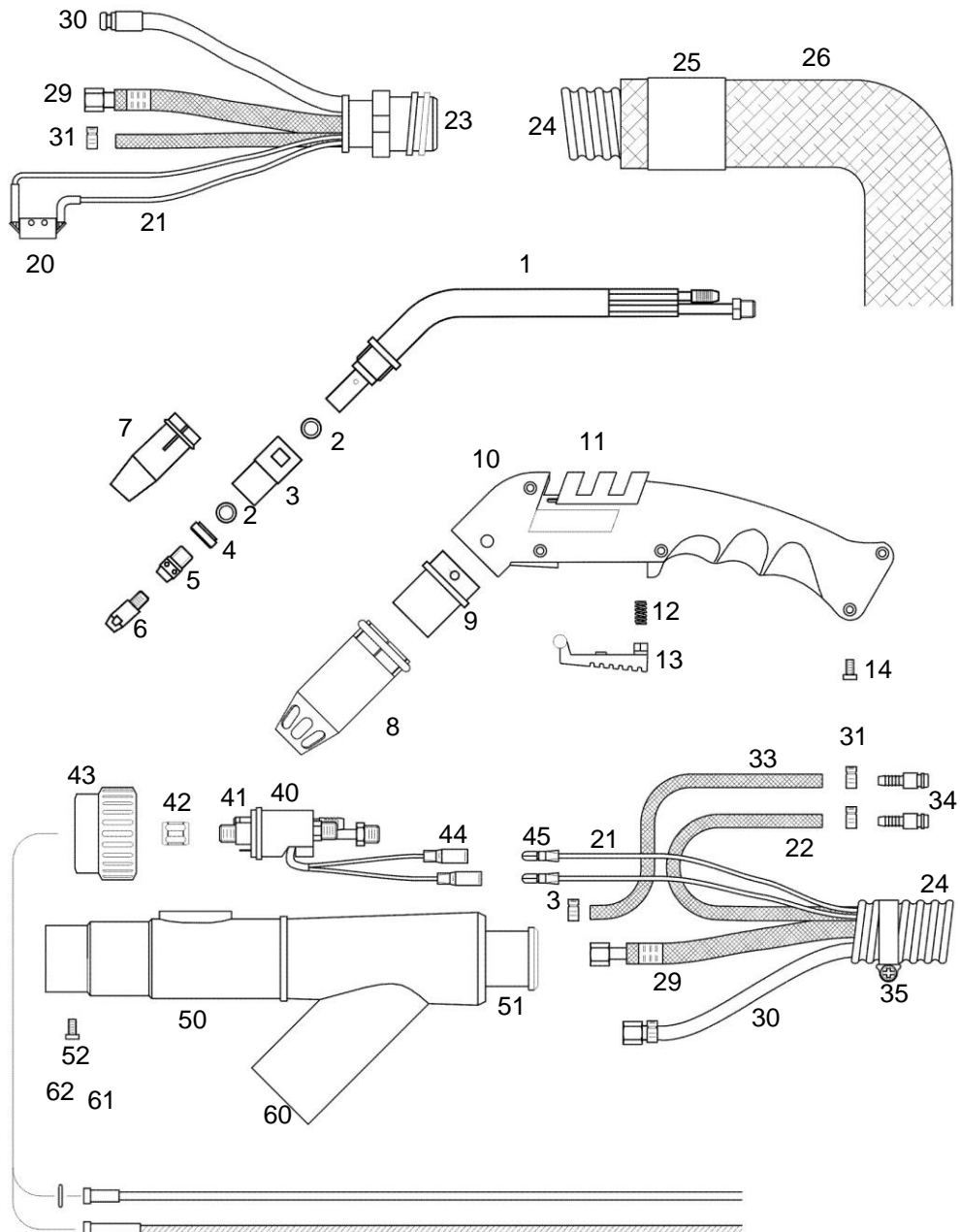
Rating:

CO₂: 400A

Mixed gas M21: 350A

Duty Cycle: @100%

Wire-Ø: 0,8 – 1,6mm





Part Number for complete Welding Torch

Part No.	3m	4m	5m
Euro-connection	7060003	7060004	7060005

Spare Part List

Pos.	Part No.	Description	Pos.	Part No.	Description
1	7060100	Swan Neck RGA FKS 400	24	2934530	Flexible Cover Hose 3 m
2	0122500	O-Ring		2934540	Flexible Cover Hose 4 m
3	2530500	Water Cooling Unit for Gas Nozzle		2934550	Flexible Cover Hose 5 m
4	2530201	Insulating Ring	25	2921206	Heat Shrink Hose
5	2530408S2	Tip Adapter M 8	26	2921115S3	Leather Hose 2,7 m
6	24106xx	Contact Tip M 8 x 30 mm / E-Cu	29	7064130	Power Cable 3 m
	24176xx	Contact Tip M 8 x 30 mm / CuCrZr		7064140	Power Cable 4 m
	24166xx	Contact Tip M 8 x 30 mm / Alu		7064150	Power Cable 5 m
	<i>Contact Tips available in \varnothing 0.8/1.0/1.2/1.6 mm Please insert wire diameter at xx. Example: \varnothing 1.2 mm is: 12; Part No. = 2410612</i>		30	7064630	Wire-Gas-Hose3 m
7	2530805	Gas Nozzle cylindrical		7064640	Wire-Gas-Hose4 m
	2530801	Gas Nozzle conical		7064650	Wire-Gas-Hose5 m
8	7060800	Spot Welding Gas Nozzle	31	0321100	Single Ear Clamp 10,0
9	7060810	Adapter Sleeve	33	2414705	Water Outlet Hose cpl. 0,55 m
10	7061000	Handle cpl.	34	2990800	Water Hose Nipple
11	6961003	Vent Control	35	2911901	Hose Clamp
12	6161106	Trigger Spring	40	7061505	Gun Plug Body with Spring Loaded Pins
13	6961002	Trigger	41	0041000	O-Ring
14	0040801	Trigger	42	2151501	Liner Positioner Nut
20	6161105	Micro Switch	43	2151700	Nut
21	6994430	Control Cable 3 m	44	2155100	Female Electrical Connector, insulated
	6994440	Control Cable 4 m	45	2155200	Male Electrical Connector, insulated
	6994450	Control Cable 5 m	50	2921601	Swivel Rear Extraction Chamber
22	2414230	Water Inlet House cpl. 3 m	51	2931700	Rear Connector
	2414240	Water Inlet House cpl. 4 m	52	0040601	Screw
	2414250	Water Inlet House cpl. 5 m			
23	7991201	Front Swivel Connector (ball and socket-joint)			



Pos.	Part No.	Description	Pos.	Part No.	Description
60	34420xx	Steel Liner 2,0 x 4,0 mm			
	34425xx	Steel Liner 2,5 x 4,0 mm			
	34120xx	PTFE- Liner 2,0 x 4,0 mm			
	34727xx	PTFE- Liner 2,7 x 4,7 mm			
		<i>Steel liner and PTFE-Liner available in 3/4/5m Please insert length at xx. Example: length 3m = Part No.3442030</i>			
61	2415645	Collet for Steel Liner 4,5 mm			
	2155740	Collet for PTFE Liner 4,0 mm			
	2415747	Collet for PTFE Liner 4,7 mm			
62	0031500	O-Ring			