



Fume-Extraction-Torch RGA 362G, air cooled

Technical data according to EN 60 974-7

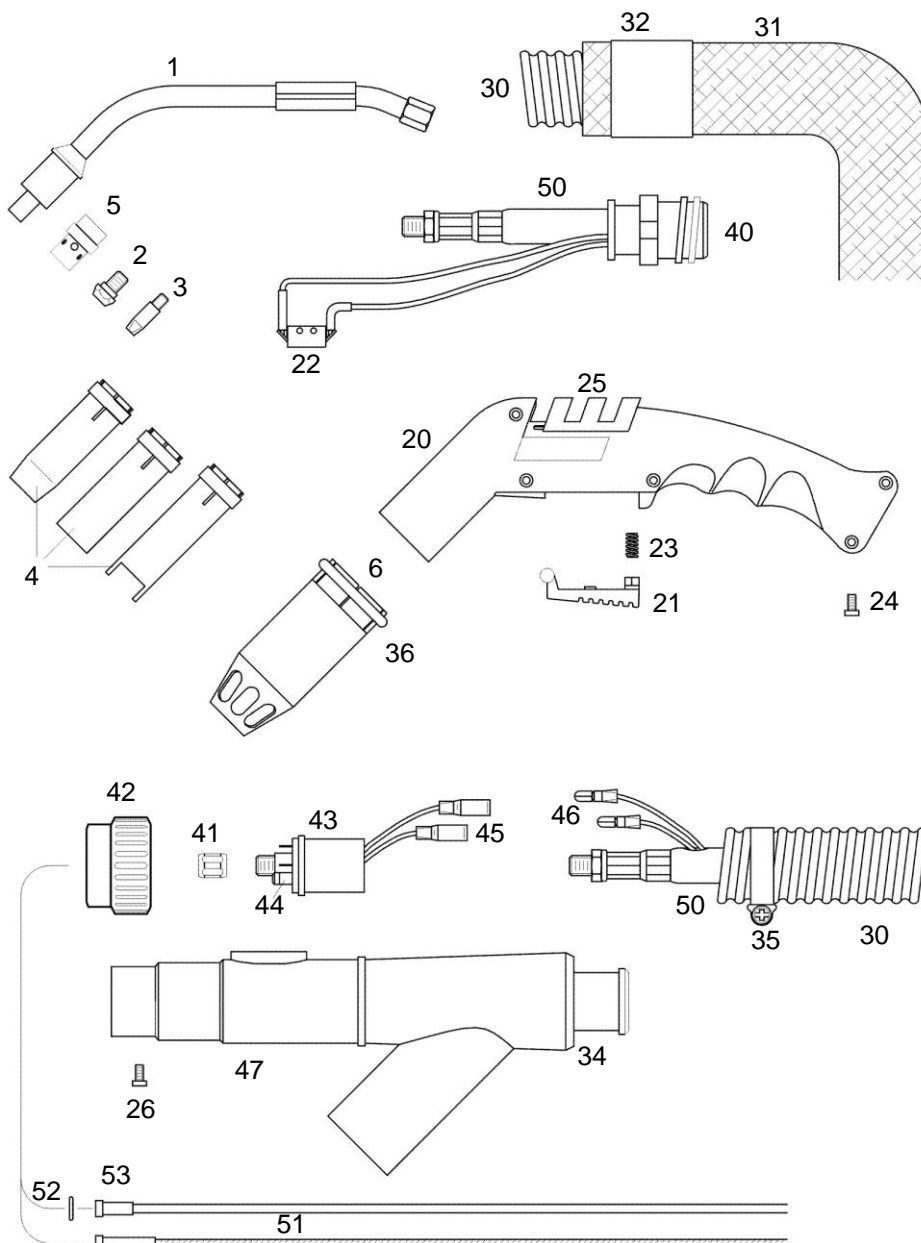
Rating:

CO₂: 300A

Mixed gas M21: 270A

Duty Cycle: @60%

Wire-Ø: 0.8 – 1.2mm





Part Number for complete Welding Torch

Part No.	3m	4m	5m
Euro-connection	6980003	6980004	6980005

Spare Part List

Pos.	Part No.	Description	Pos.	Part No.	Description
1	6980100	Swan Neck	30	2924530	Flexible Cover Hose 3 m
2	2360406	Tip Adapter M 6 short		2924540	Flexible Cover Hose 4 m
	2360416	Tip Adapter M 6 long		2924550	Flexible Cover Hose 5 m
	2360408	Tip Adapter M 8 short	31	2921115	Leather Hose 1.5 m
	2360418	Tip Adapter M 8 long	32	2921206	Heat Shrink Hose
3	22506xx	Contact Tip M 6 x 28, ø in mm / ECu	34	2921700	Rear Swivel Connector
	22576xx	Contact Tip M 6 x 28, ø in mm / CuCrZr	35	2911900	Hose Clamp
	22566xx	Contact Tip M 6 x 28, ø in mm / Alu	36	2920801	Clamping Ring
	<i>Contact Tips available in ø 0,8 / 0,9 / 1,0 / 1,2 / 1.6 mm Please insert wire diameter at xx. Example: ø 1.2 mm is: 12; Part No = 2250612</i>		40	6961200	Front Swivel Connector
4	2360801	Gas Nozzle, cylindrical	41	2151501	Liner Positioner Nut
	2360802	Gas Nozzle, conical	42	2151700	Nut
	2360803	Gas Nozzle, tapered	43	2151500	Gun Plug Body, air cooled
	2360805	Spot Welding Gas Nozzle		2151505	Gun Plug Body with Spring Loaded Pins
5	2360702	Gas Diffusor, white	44	0041000	O - Ring
	2360700	Gas Diffusor, black	45	2155100	Female Electrical Connector, insulated
6	6980801	Fume Extraction Nozzle RGA 362 G	46	2155200	Male Electrical Connector, insulated
20	6961000	Handle cpl.	47	2921600	Rear Extraction Chamber
	6961001	Handle, left & right half	50	3002530	Coaxial Cable 25 mm ² , 3 m
21	6961002	Trigger		3002540	Coaxial Cable 25 mm ² , 4 m
22	6161105	Micro Switch		3002550	Coaxial Cable 25 mm ² , 5 m
23	6161106	Trigger Spring	51	34415xx	Steel Liner 1,5 x 4,0 mm
24	0040801	Screw		34115xx	PTFE-Seele 1,5 x 4,0 mm
25	6961003	Vent Control		34420xx	Steel Liner 2,0 x 4,0 mm,
26	0040601	Screw		34120xx	PTFE-Seele 2,0 x 4,0 mm
					<i>Steel Liner and PTFE-Liner available in 3/4/5m Please insert length at xx. Example: length 3m =Part No. 3441530</i>



Pos.	Part No.	Description	Pos.	Part No.	Description
52	0031500	O-Ring			
53	2155645	Collet for coated Liner 4,0			
	2155740	Collet for PTFE-Liner 4,0			