

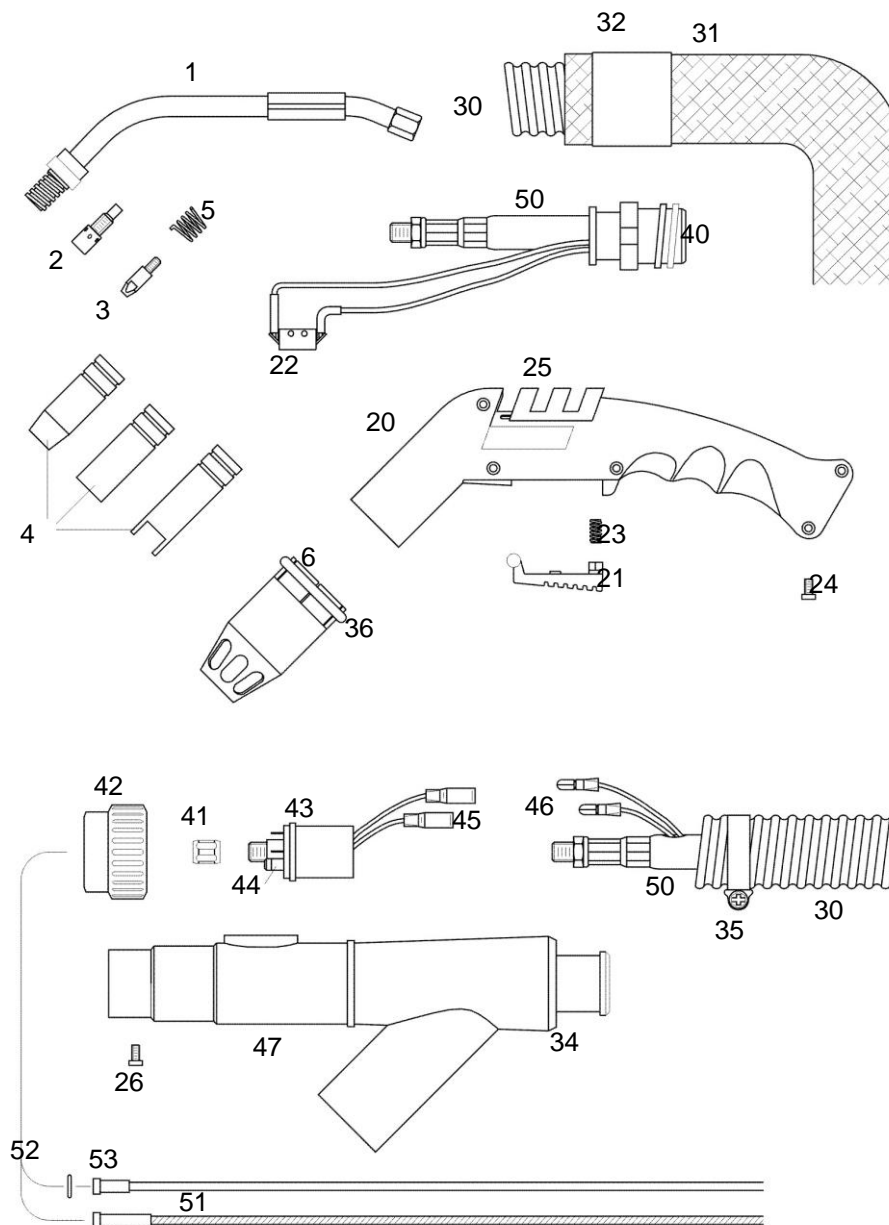


Fume-Extraction-Torch RGA 252 G, air cooled

Technical data according to EN 60 974-7

Rating:

CO ₂ :	230A
Mixed gas M21:	200A
Duty Cycle:	@60%
Wire-Ø:	0.8 – 1.2mm





Part Number for complete Welding Torch

Part No.	3m	4m	5m
Euro-connection	6970003	6970004	6970005

Spare Part List

Pos.	Part No.	Description	Pos.	Part No.	Description
1	6970100	Swan Neck for Slip-on Nozzle	26	0040601	Screw
	6970101	Swan Neck for Screw-on Nozzle	30	2924530	Flexible Cover Hose 3 m
2	2250406	Tip Adapter M 6		2924540	Flexible Cover Hose 4 m
	2250408	Tip Adapter M 8		2924550	Flexible Cover Hose 5 m
3	22506xx	Contact Tip M 6 x 25, ø in mm / ECu	31	2921115	Leather Hose 1.5 m
	22576xx	Contact Tip M 6 x 25, ø in mm / CuCrZr	32	2921206	Heat Shrink Hose
	22566xx	Contact Tip M 6 x 25, ø in mm / for Alu	34	2921700	Rear Swivel Connector
	<i>Contact Tips available in ø 0,8 / 0,9 / 1,0 / 1,2 mm Please insert wire diameter at xx. Example: ø 1.2 mm is: 12; Part No. = 2250612</i>		35	2911900	Schlauchklemme
			36	2920801	Spannring
4	2250801	Slip-on Nozzle, cylindrical	40	6961200	Front Swivel Connector
	2250802	Slip-on Nozzle, conical	41	2151501	Liner Positioner Nut
	2250803	Slip-on Nozzle, tapered	42	2151700	Nut
	2250804	Slip-on Nozzle, bottle shape	43	2151500	Gun Plug Body, air cooled
	2250805	Slip-on Spot Gas Welding Nozzle		2151505	Gun Plug Body with Spring Loaded Pins
	2250811	Screw-on Nozzle, cylindrical	44	0041000	O - Ring
	2250812	Screw-on Nozzle, conical	45	2155100	Female Electrical Connector, insulated
	2250813	Screw-on, Nozzle, tapered	46	2155200	Male Electrical Connector, insulated
	2250815	Screw-on Spot Gas Welding Nozzle	47	2921600	Rear Extraction Chamber
5	2250500	Nozzle Spring	50	3002530	Coaxial Cable 25 mm ² , 3 m
6	2920800	Fume Extraction Nozzle RGA 252 G		3002540	Coaxial Cable 25 mm ² , 4 m
20	6961000	Handle cpl.		3002550	Coaxial Cable 25 mm ² , 5 m
	6961001	Handle, left & right half			
21	6961002	Trigger			
22	6161105	Micro Switch			
23	6161106	Trigger Spring			
24	0040801	Screw			
25	6961003	Vent Control			



Pos.	Part No.	Description	Pos.	Part No.	Description
51	34415xx	Steel Liner 1,5 x 4,0 mm			
	34115xx	PTFE- Liner 1,5 x 4,0 mm			
	34420xx	Steel Liner 2,0 x 4,0 mm			
	34120xx	PTFE- Liner 2,0 x 4,0 mm			
		<i>Steel Liner and PTFE- Liner available in 3/4/5m Please insert length at xx. Example: length 3m =Part No. 3441530</i>			
52	0031500	O - Ring			
53	2155645	Collet for coated Liner 4,0			
	2155740	Collet for PTFE-Liner 4,0			