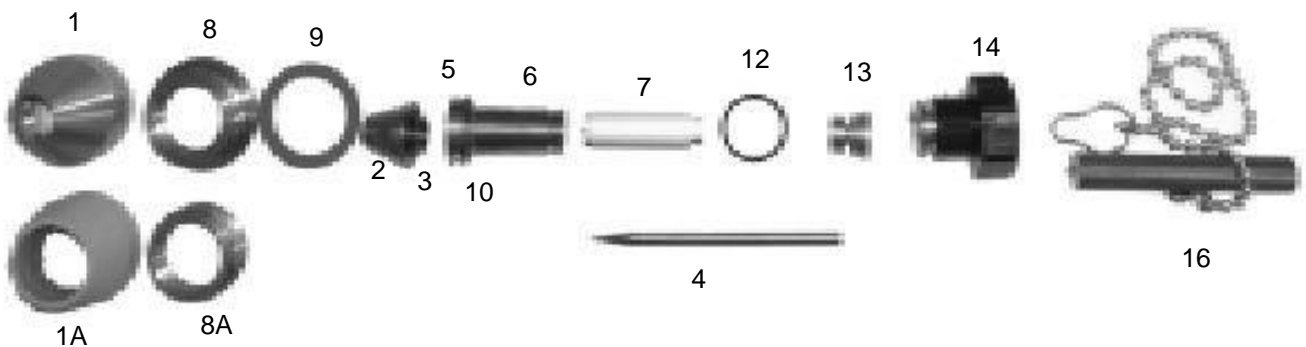
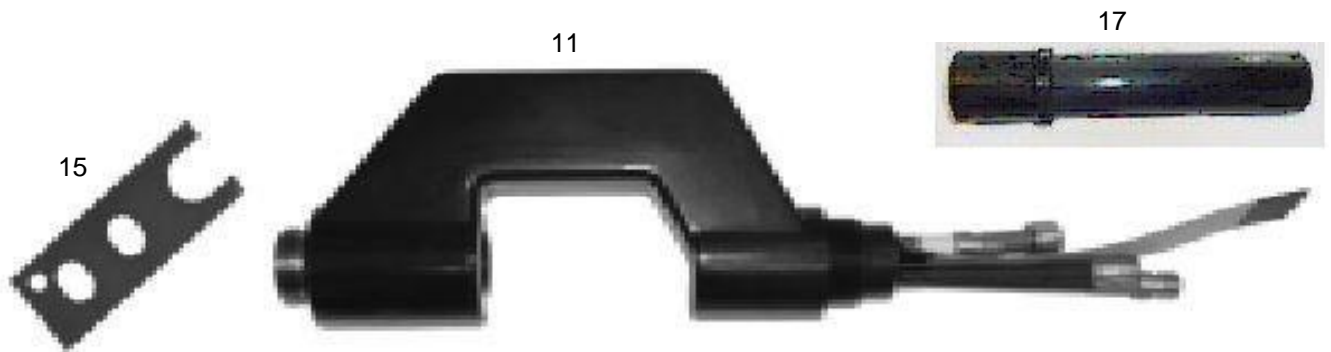




Machine Welding Torch PWM 300, water cooled

Technical data according to EN 60 974-7

Rating:	300A DC
Duty cycle:	@100%
Plasma gas:	Argon
Shielding gas:	Argon / Hydrogen / Helium
Water requirements:	2,3 l / Min. at 3,5 bar





Part Number for complete Welding Torch

Part No.	3m	5m	8m
Single Connection	75305000	75305200	75305300

Spare Part List

Pos.	Part No.	Description	Pos.	Part No.	Description
1	75305007	Gas Nozzle Metal		75305310	Cable Assembly 4 m
1A	75305014	Gas Nozzle ceramic		75305320	Cable Assembly 5 m
2	75305006	Nozzle 200 A 2,4 mm		75305330	Cable Assembly 8 m
	75305009	Nozzle 250 A 2,8 mm			
	75305010	Nozzle 300 A 3,2 mm		75301628	Connection 9/16 - 18 UNF / G 1/8 (2 pcs)
3	75305015	O-Ring		75301629	Connection 9/16 - 18 UNF/ G 1/4 (2 pcs)
4	75301541	Electrode		75303051	Reduction 9/16 - 18 UNF / G 3/8
5	75305016	O-Ring		75303052	Reduction 9/16 - 18 UNF / M12 x 1
6	75305011	Guide			
7	75305013	Insulating Sleeve			
8	75305012	Adapter for Gas Nozzle Metal			
8A	75305019	Adapter for Gas Nozzle ceramic			
9	75305003	Sealing Ring			
10	75305017	O-Ring			
11	75305001	Torch Body			
12	75305018	O-Ring			
13	75305004	Collet			
14	75305005	Back Cap			
15	75305008	Tool for Nozzle / Guide			
16	75305020	Gauge			
17	75305002	Insulating Tube PWM 300			