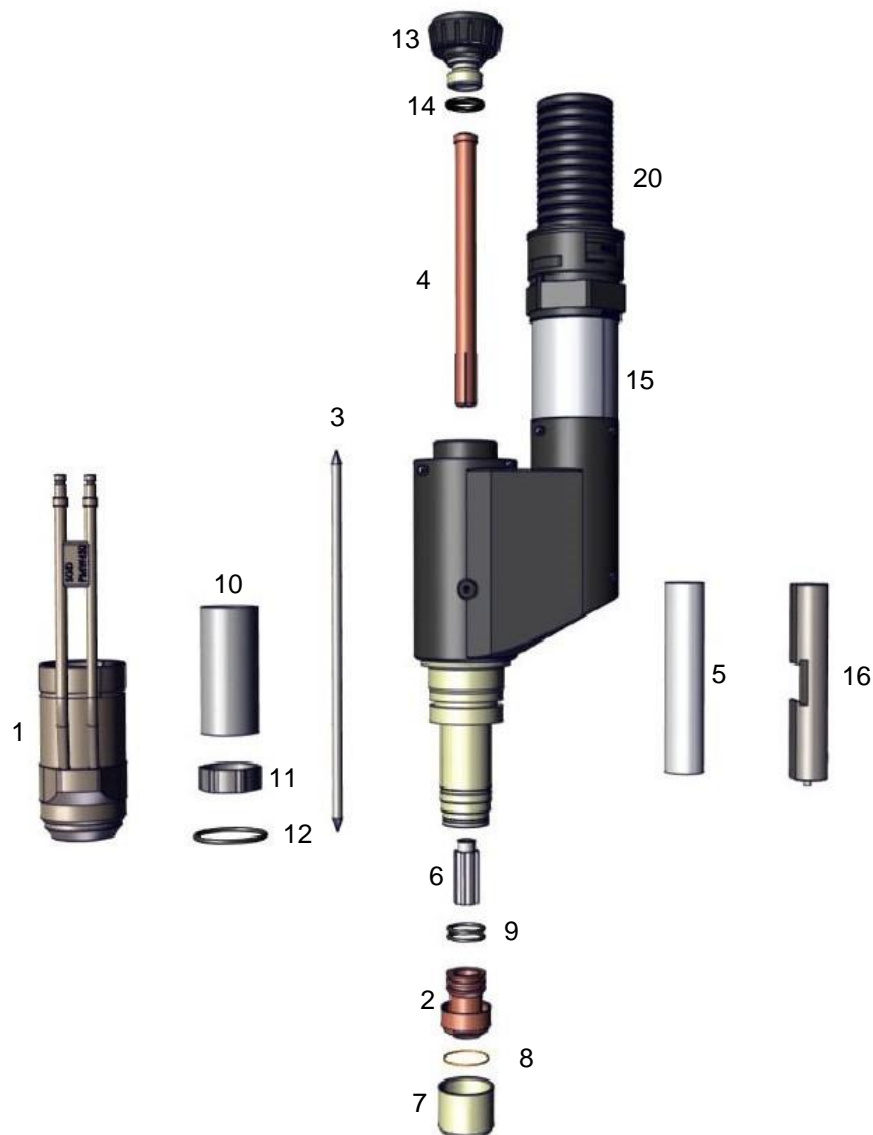




Machine Welding Torch PMW 450, water cooled

Technical Data according to EN 60 974-7

Rating:	80 – 450A DC
Duty cycle:	@100%
Pilot current:	10 - 35 A
Tungsten electrodes:	Ø3,2 - 5,0mm





Part Number for complete Welding Torch

Part No.	2m	3m	4m
Machine Torch cpl.	354500200	354500300	354500400

Spare Part List

Pos.	Part No.	Description	Pos.	Part No.	Description
1	354510019	Gas Nozzle, water cooled	13	70116200	Back Cap
2	3545100141	Orifice Insert 3,2 mm	14	46205360	O-Ring for Back Cap
	3545100151	Orifice Insert 4,0 mm	15	354510001	Torch Body PMW 450
	354510017	Orifice Insert 5,0 mm	16	354510029	Gauge
3	354510023	Electrode 5,0mm	20	354540012x	Cable Assembly cpl. 2 m
	354510022	Electrode 4,0mm		354540013x	Cable Assembly cpl. 3 m
	3545100231	Electrode 3,2mm		354540014x	Cable Assembly cpl. 4 m
4	354510450	Collet 5,0mm	Without picture	50010025	Spare Part Box, without spares
	354510452	Collet 4,0mm	Without picture	75105105	Silicon paste for lightly o-ring grease
	354510451	Collet 3,2mm			
5	354510005	Insulator			
6	354510460	Center Piece 5,0 mm			
	354510462	Center Piece 4,0 mm			
	354510461	Center Piece 3,2 mm			
7	354510470	Insert Cap			
8	354510011	O - Ring			
9	354510010	O - Ring for Welding Nozzle			
10	354510006	Insulator Tube			
11	354510007	Distance Sleeve			
12	354510008	O-Ring for Gas Nozzle			



AUTOGEN-RITTER GmbH

Schutzgas-Schweißbrenner MIG-MAG WIG/TIG Plasma Ersatzteile

Kompetenz seit 1920.