



Machine Welding Torch M 600W AUT, water cooled

Technical Data according to EN 60 974-7

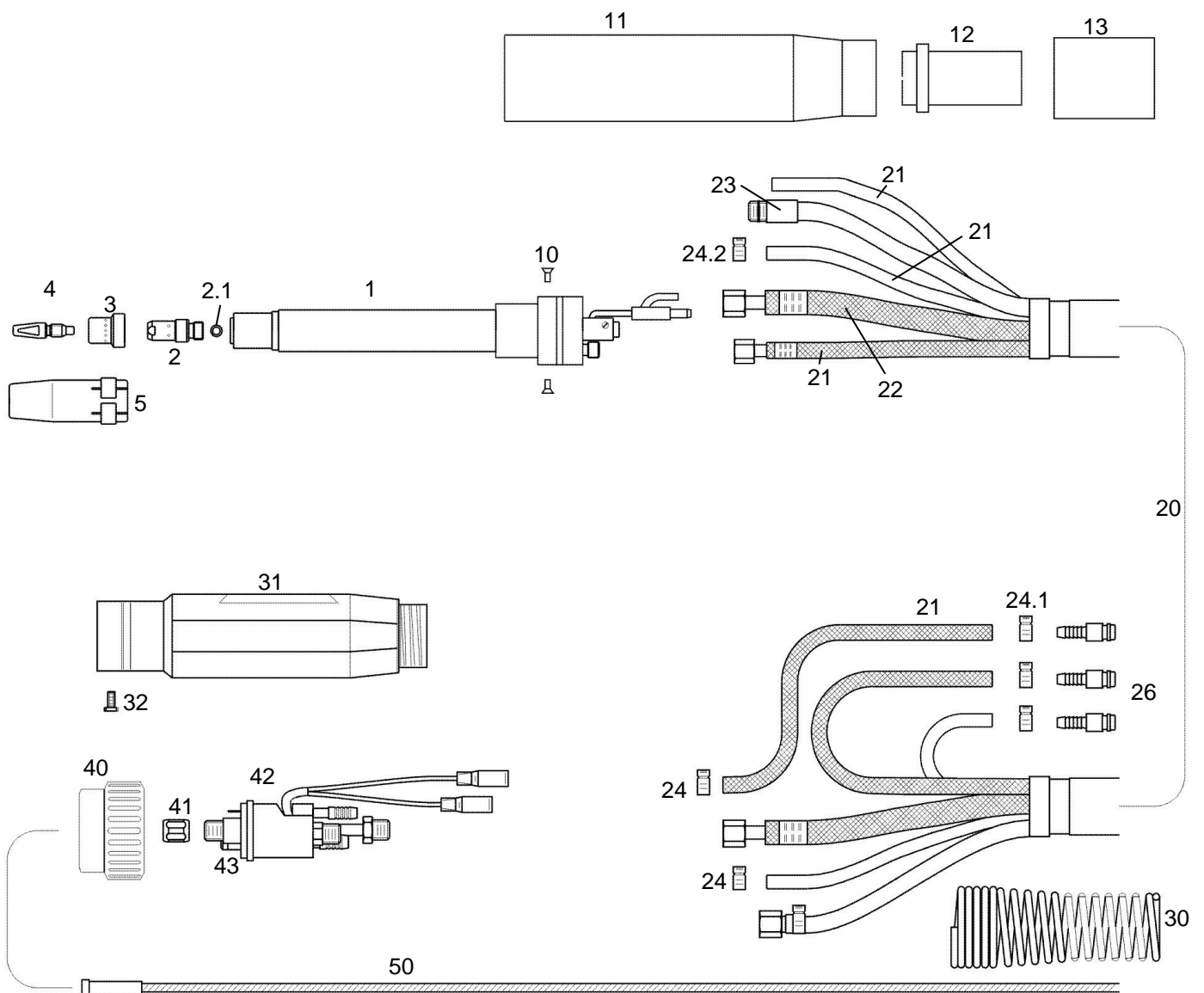
Rating:

CO₂: 600A

Mixed gas M21: 500A

Duty cycle: @100%

Wire-Ø: 0,8 – 1,6mm





Part Number for complete Welding Torch

Part No.	3m	4m	5m
with straight neck	75106821S	75106821S1	75106821S9
with 22° neck	75106822S2	75106822S4	75106822S5
with 45° neck	75106823S4	75106823S5	75106823S6

Spare Part List

Pos.	Part No.	Description	Pos.	Part No.	Description
1	76585011	Swan Neck M 600 straight	22	75105358	Power Cable 3 m
	76585011S1	Swan Neck M 600, 22°		75105359	Power Cable 4 m
	76585011S2	Swan Neck 45 °		75105359S	Power Cable 5 m
2	75106520	Tip Holder	23	75120277	Liner Conduit cpl 3 m
2.1	41209055	Spring Ring		75120280	Liner Conduit cpl. 4 m
3	75106596	Gas Diffuser		75120280S	Liner Conduit cpl. 5 m
4	41150310	Contact Tip ø 0,8 mm	24	0321095	Single Ear Clamp 9,5
	41150320	Contact Tip ø 1,0 mm	24.1	0321100	Single Ear Clamp 10,0
	41150180	Contact Tip ø 1,2 mm	24.2	0321087	Single Ear Clamp 8,7
	41150450	Contact Tip ø 1,6 mm	26	2990800	Water Hose Nipple
5	75106484	Gas Nozzle conical, ø 13 mm	30	2411611	Cable Support Spring
	75106483	Gas Nozzle conical, ø 17 mm	31	2411600S1	Gun Plug Housing
	75106483	Gas Nozzle conical with Gliss Coat ® coating	32	0040601	Screw
10	40233105	Screw	40	2151700	Nut
11	75106199	Tube	41	2151501	Liner Positioner Nut
12	75106198	Cable Support	42	75199012	Central - Connector Water, ML
13	75106157	Cap	43	0041000	O - Ring
20	75106292S4	Cable Assembly cpl. 3 m	50	3401531	Steel Liner 1,5 x 4,0 mm / 3 m
	75106292S5	Cable Assembly cpl. 4 m		3401541	Steel Liner 1,5 x 4,0 mm / 4 m
	75106292S6	Cable Assembly cpl. 5 m		3401551	Steel Liner 1,5 x 4,0 mm / 5 m
21	0140367	Hose per m (Water Inlet / Gas / Air)		3411530	PTFE- Liner 1,5 x 4,0 mm / 3 m
				3411540	PTFE- Liner 1,5 x 4,0 mm / 4 m
				3411550	PTFE- Liner 1,5 x 4,0 mm / 5 m



Pos.	Part No.	Description	Pos.	Part No.	Description
50	3412030	PTFE- Liner 2,0 x 4,0 mm / 3 m			
	3412040	PTFE- Liner 2,0 x 4,0 mm / 4 m			
	3412050	PTFE- Liner 2,0 x 4,0 mm / 5 m			
	3452031	Steel Liner 2,0 x 4,5 mm / 3 m			
	3452041	Steel Liner 2,0 x 4,5 mm / 4 m			
	3452051	Steel Liner 2,0 x 4,5 mm / 5 m			
	3452531	Steel Liner 2,5 x 4,5 mm / 3 m			
	3452541	Steel Liner 2,5 x 4,5 mm / 4 m			
	3452551	Steel Liner 2,5 x 4,5 mm / 5 m			
	3472730	PTFE- Liner 2,7 x 4,7 mm / 3 m			
	3472740	PTFE- Liner 2,7 x 4,7 mm / 4 m			
	3472750	PTFE- Liner 2,7 x 4,7 mm / 5 m			