

# Cobot welding torch

2023

# Cobot welding torch

**Freely assignable function keys**

**Integrated gas nozzle sensor for tactile seam search using the gas nozzle**

**MRC-Optimized**

**Double circuit cooled welding torch for a fast-cooling torch outer tube**

**Minimalistic hose package**

**Neckliner**

**Compatibility with different Cobot manufacturers**

**Easy to use**

**High precision**



## M-AR 5.2W-C, water cooled



### Technical data:

Rating:	450 A
Duty cycle:	100 %
Wire-Ø:	0,8 - 1,6 mm
Torch necks:	22,5° / 45° / 0°
Torch length:	3,5 m*
Connection machine side:	Euro-Connection*

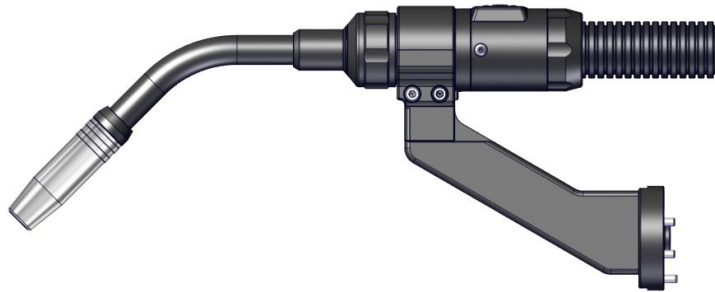
## M-AR 5.2W-C-PP, water cooled



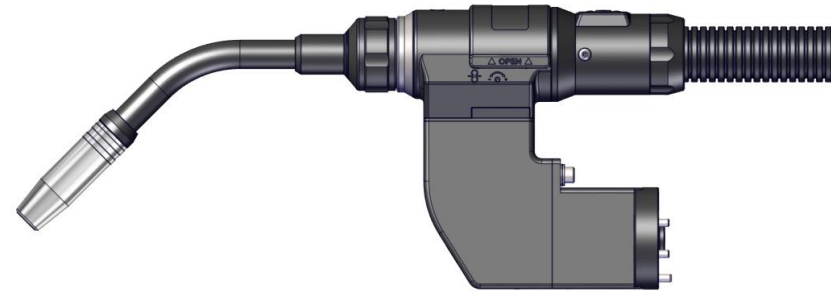
### Technical data:

Rating:	400 A
Duty cycle:	100 %
Wire-Ø:	0,8 – 1,6 mm
Torch necks:	22,5° / 45° / 0°
Feeding speed:	0,5 – 25 m/min
Torch length:	4,5 m*
Connection machine side:	Euro-Connection*

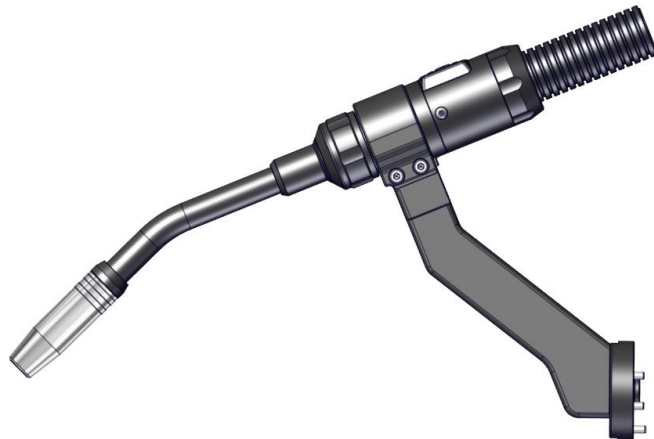
Holder for Cobot-torch lead 45°



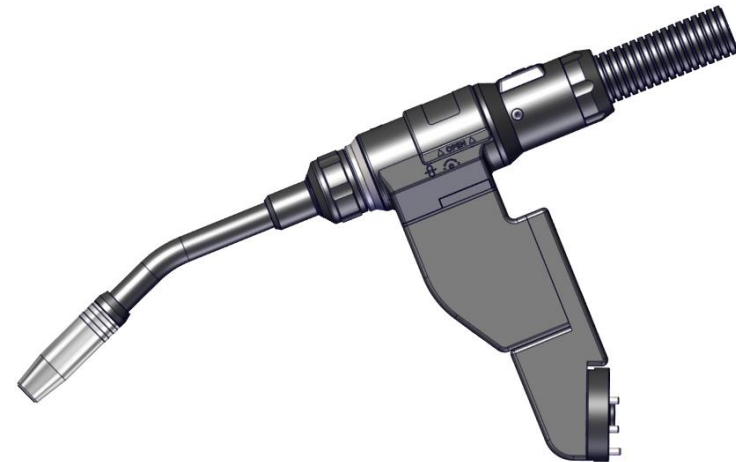
Holder for Cobot-PP-torch lead 45°



Holder for Cobot-torch lead 22,5°

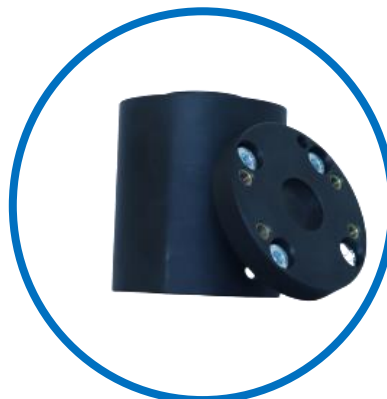


Holder for Cobot-PP-torch lead 22,5°





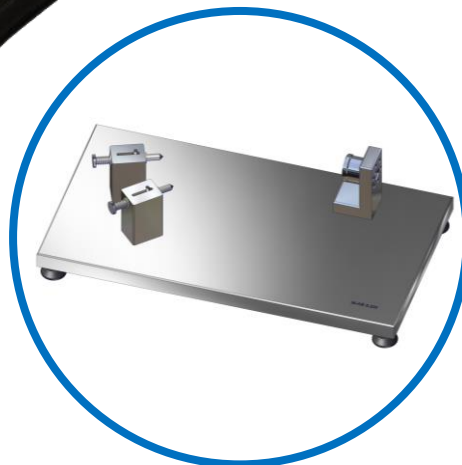
**AiR WeldGuard fume extraction kit**



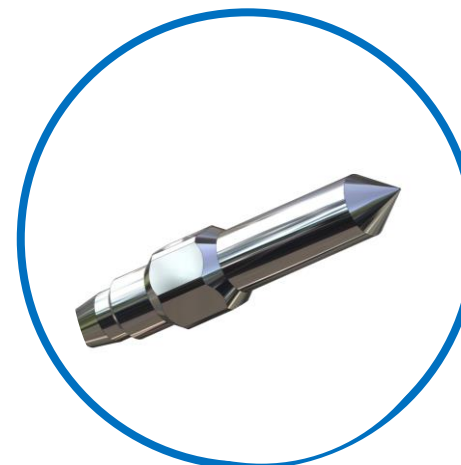
**Adapter flange**



**function keys**



**Testing gauge**



**Teachtip**



# Cobot welding torch



Series launch in Q4