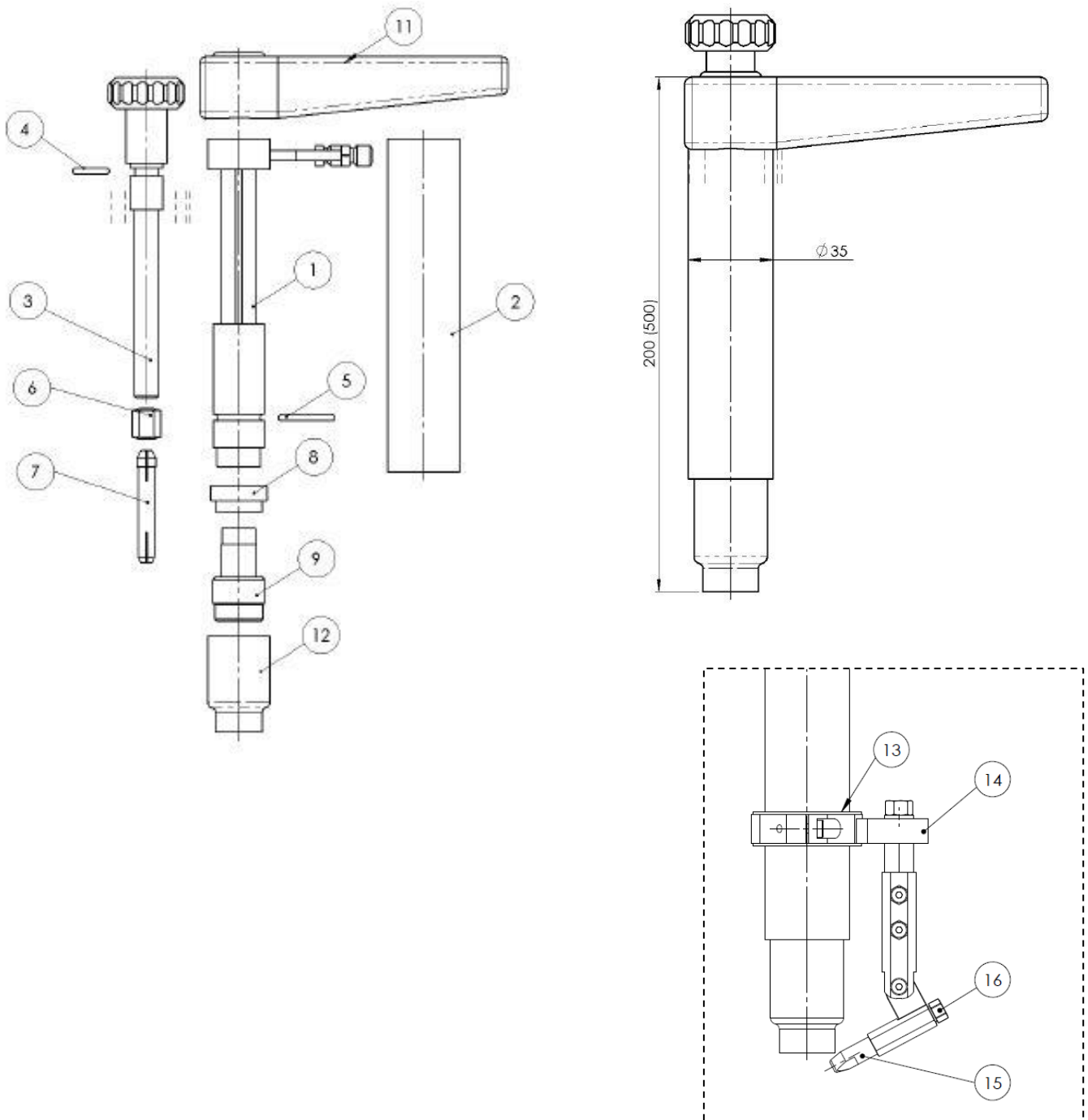




## Machine Torch AUT-WIG 500W, water cooled

Technical data according to EN 60 974-7

Rating: 500A DC  
350A AC  
Duty cycle: @100%  
Tungsten electrodes:  $\varnothing 2,4-4,8\text{mm}$





### Part Number for complete Welding Torch

Part No.	4m	8m
AUT-WIG 500 W-200mm, Single Connection	51194001	51198001
AUT-WIG 500 W-500mm, Single Connection	51194101	51198101

### Spare Part List

Pos.	Part No.	Description	Pos.	Part No.	Description
1	511900200	Torch Body 200 mm long, cpl.	14	51190603	Cold Wire mounting
	511900500	Torch Body 500 mm long, cpl.	15	350030005	Cold Wire Nozzle 0,8mm
2	511902200	Insulator Tube 200 mm, cpl.		350030006	Cold Wire Nozzle 1,0mm
	511902500	Insulator Tube 500 mm, cpl.		350030007	Cold Wire Nozzle 1,2mm
3	511903200	Electrode Holder for 200mm with Knob	16	350030001	Collet
	511903500	Electrode Holder for 500mm with Knob			
4	51190411	O-Ring			
5	51190412	O-Ring			
6	51190413	Nut			
7	511904xx	Collet			
		<i>Collets available in <math>\varnothing</math> 2.4/3.2/4.0/4.8 mm</i>			
		<i>Please insert diameter at xx.</i>			
		<i>Example: <math>\varnothing</math> 4,0 mm is: 40; Part-No.: = 51190440</i>			
8	51190414	Insulating Ring			
9	511905xx	Gas Lens			
		<i>Gas Lenses available in <math>\varnothing</math> 2.4/3.2/4.0/4.8 mm</i>			
		<i>Please insert wire diameter at xx.</i>			
		<i>Example: <math>\varnothing</math> 4,0 mm is: 40; Part-No.: = 51190540</i>			
no fig.	51190415	Screw M5			
11	51190416	Insulating Sleeve			
12	57N75	Ceramic Gas Nozzle Gr. 6			
	57N74	Ceramic Gas Nozzle Gr. 8			
	53N88	Ceramic Gas Nozzle Gr. 10			
	53N87	Ceramic Gas Nozzle Gr. 12			
13	51190600	Ring			