

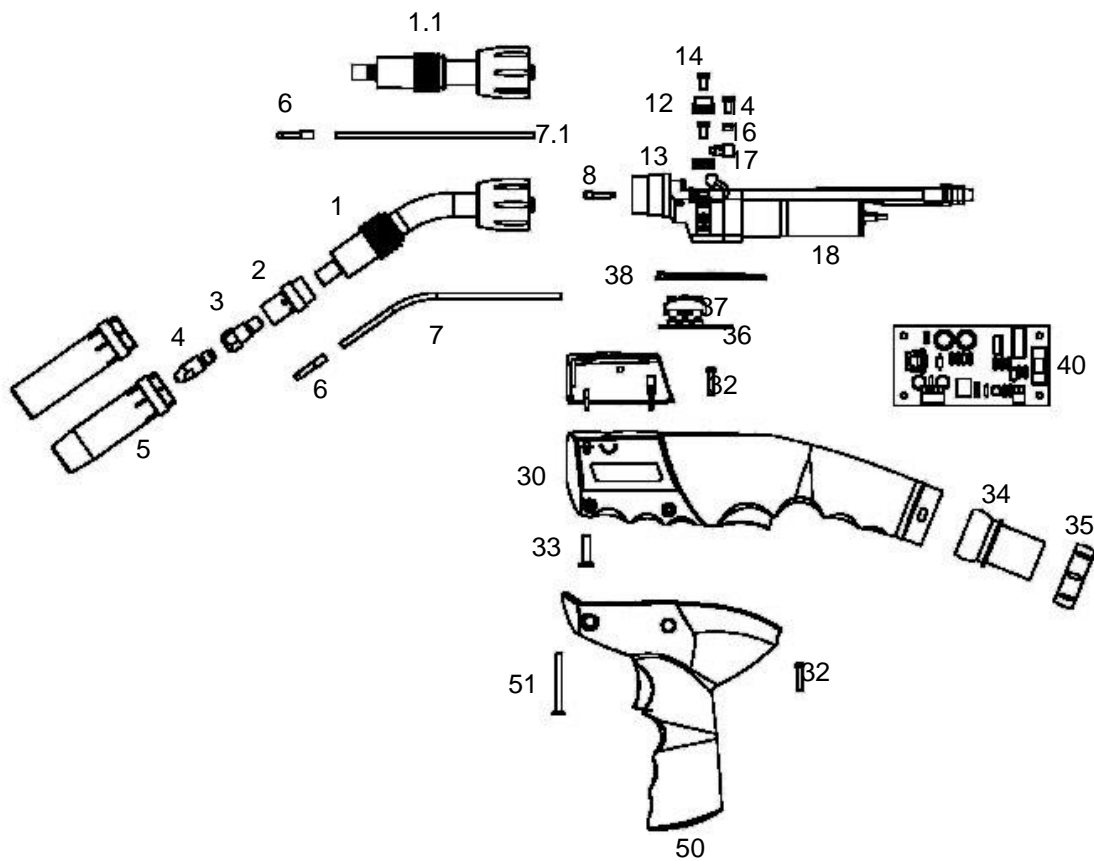


Push-Pull-Manual Welding Torch ARgo PP 360G, gas cooled

Technical data according to EN 60 974-7

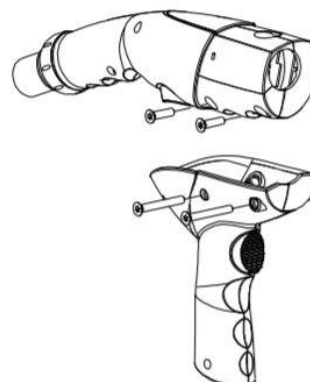
Rating:

CO ₂ :	300A
Mixed Gas M21:	250A
Duty cycle:	@60%
Wire-Ø:	0.8 – 1.2mm



Assembling Pistol Grip Handle:

- remove short screws (Pos.33)
- bring the Pistol Grip in position
- insert long screws (Pos.51)





Part Number for complete Welding Torch

Part. No.	6m	8m	10m
With straight neck	70816000	70818001	708110001
with 35° neck	70816002	70818002	708110002

Spare Part List

Pos.	Part.No.	Descripton	Pos.	Part.No.	Description
1	7081300	Swan Neck 35°		7082410	Drive Roll Ø 1,0mm Alu
1.1	7081200	Swan Neck straight		7082411	Drive Roll Ø 1,0mm Steel
2	2360702	Gas Diffusor white		7082402	Drive Roll Ø 1,2mm Alu
	2360700	Gas Diffusor black		7082412	Drive Roll Ø 1,2mm Steel
3	2360406	Tip Adapter M 6, short	13	7082508	Pressure Roll Ø 0,8mm Alu/Steel
	2360408	Tip Adapter M 8, short		7082509	Pressure Roll Ø 0,9mm Alu/Steel
	2360416	Tip Adapter M 6, long		7082510	Pressure Roll Ø 1,0mm Alu/Steel
	2360418	Tip Adapter M 8, long		7082512	Pressure Roll Ø 1,2mm Alu/Steel
4	24106xx	Contact Tip M 8 x 30, ø in mm / Ecu	14	7080104	Screw
	24176xx	Contact Tip M 8 x 30, ø in mm / CuCrZr	16	7080107	Clamp
	24166xx	Contact Tip M 8 x 30, ø in mm / for Alu	17	7080120	Wire Guide
	22506xx	Contact Tip M 6 x 28, ø in mm / ECu	18	70801003	Drive Unit ARgo-PP gas, cpl.
	22576xx	Contact Tip M 6 x 28, ø in mm / CuCrZr	30	7141020	Handle ARgo-PP cpl.
	22566xx	Contact Tip M 6 x 28, ø in mm / für / for Alu	32	00316041	Screw
	<i>Contact Tips available in ø 0.8 / 0.9 / 1.0 / 1.2 / 1.4 / 1.6 mm Please insert wire diameter at xx. Example: ø 1.2 mm is: 12; Part No.: = 2410612</i>		33	0052001	Screw TX
5	2360802	Gas Nozzle, conical	34	45050240	Swivel
	2360803	Gas Nozzle, tapered	35	2113102	Ring
	2530801	Gasdüse, cylindrical	36	7141025	optional: PCB UP/DOWN
6	1000187	Wire Guide	37	2112111S	optional: Trigger Insert UP/DOWN, black
7	70810201	Wire Guide Liner	38	7141024	optional: Cover for Trigger Insert UP/DOWN
7.1	70810202	Wire Guide Liner for straight neck	40	7072100	PCB Pull Motor Drive Board
8	7080110	Wire Guide	50	7141022	Pistol Grip Handle Attachment
12	7082408	Drive Roll Ø 0,8mm Alu	51	0044001	Screw TX
	7082418	Drive Roll Ø 0,8mm Steel	ohne Abb.	7083964	Cable Assembly 6m, cpl. with Euro-Connector
	7082409	Drive Roll Ø 0,9mm Alu	ohne Abb.	7083984	Cable Assembly 8m, cpl. with Euro-Connector
	7082419	Drive Roll Ø 0,9mm Steel	ohne Abb.	70839104	Cable Assembly 10m, cpl. with Euro-Connector